



## Bellewstown Golf Club Rules and Bye-Laws

<b>Document Version</b>	<b>V1.1</b>
<b>Last Updated By</b>	Paul Sullivan
<b>Version Update History</b>	Agreed version after general committee meeting on 15 Oct 2009 Updated based on comments from Robert Power and Robert Hayes

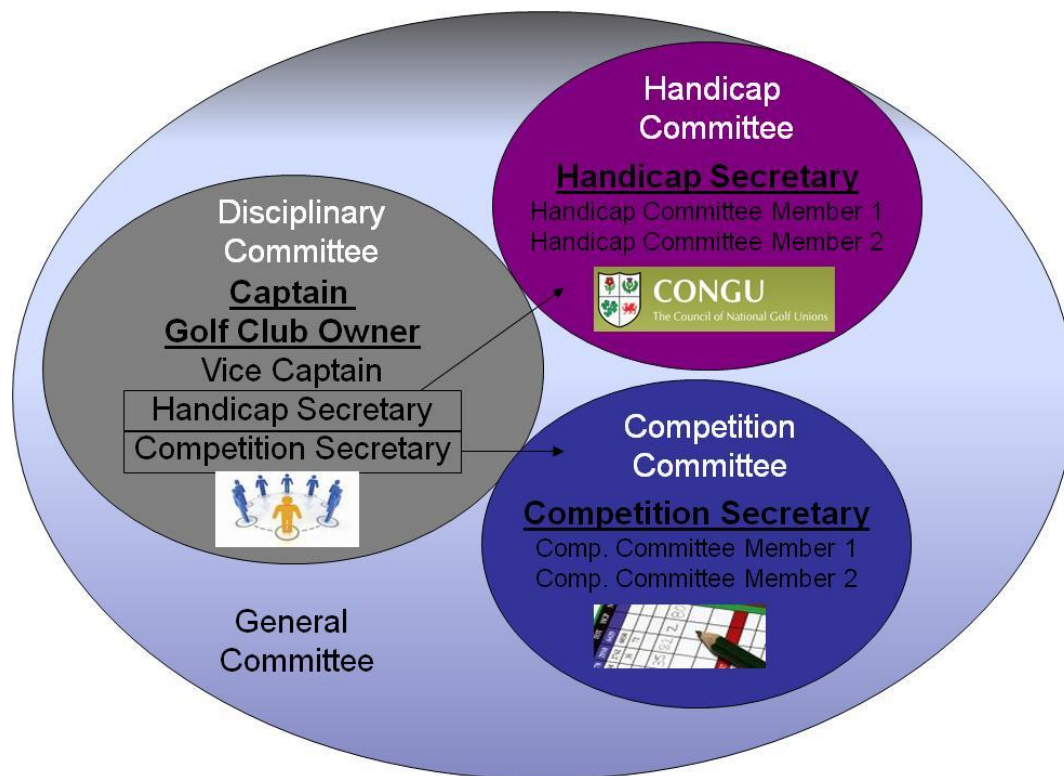
1	Assumptions.....	2
2	Etiquette Bye Laws.....	3
2.1	Club Colours and Emblem .....	4
2.2	Representative Dress .....	4
2.3	General Dress Code .....	4
2.4	Conduct on the Golf Course .....	4
2.5	Timekeeping.....	4
2.6	Slow Play .....	5
2.7	Priority.....	5
3	Competitions Bye Laws .....	6
3.1	Definition of Major Competitions .....	6
3.2	General Competition.....	6
3.3	Juvenile Members .....	7
3.4	Matchplay Competitions .....	7
4	Handicap Bye Laws .....	8
4.1	Non Return of Competition Scorecards.....	8
4.2	Annual Handicap Review.....	8
5	Disciplinary Bye-Laws .....	9
5.1	General.....	9
5.2	Appeal Process .....	9
6	Local Rules .....	10
6.1	Course.....	10
6.2	Placing.....	11
7	Procedure for Bye Law Changes.....	12
7.1	Change Log.....	12
7.2	Change Process .....	12

# 1 Assumptions

The following roles are assumed in the golf club in order to enforce these bye laws:-

- Golf Course Owner
- Honorary Secretary
- Captain
- Vice-Captain
- Handicap Committee
  - Handicap Secretary
- Competition Committee
  - Competition Secretary

Recommended Structure for Bellewstown Golf Club



Note: the Competition Secretary and Handicap Secretary can delegate to a member of their committee to represent them on the disciplinary committee.

## 2 Etiquette Bye Laws

If players follow the guidelines in this section, it will make the game more enjoyable for everyone. If a player consistently disregards these guidelines during a round or over a period of time to the detriment of others, it is recommended that the **Disciplinary Committee** considers taking appropriate disciplinary action against the offending player. Such action may, for example, include prohibiting play for a limited time on the course or in a certain number of competitions. This is considered to be justifiable in terms of protecting the interests of the majority of golfers who wish to play in accordance with these guidelines. In the case of a serious breach of etiquette, the Committee may disqualify a player under Rule 33-7 of the rules of golf.

### **Rule 33-7. Disqualification Penalty; Committee Discretion**

A penalty of disqualification may in exceptional individual cases be waived, modified or imposed if the Committee considers such action warranted. Any penalty less than disqualification must not be waived or modified. If a Committee considers that a player is guilty of a serious breach of etiquette, it may impose a penalty of disqualification under this Rule.

## ***2.1 Club Colours and Emblem***

- 2.1.1 The official Club Emblem is as displayed above and the Club colours shall be red and white.

## ***2.2 Representative Dress***

- 2.2.1 Members representing the Club in competition should wear dark trousers/slacks, white polo shirt (preferably with Club Emblem thereon) and the official Club sweater.

## ***2.3 General Dress Code***

- 2.3.1 All members will wear appropriate footwear while playing on the course;
- 2.3.2 Members playing in Club competitions shall at all times wear smart casual clothing, (Trousers/slacks/tailored shorts);
- 2.3.3 The wearing of tracksuit bottoms, non tailored shorts, football jerseys and vest tops by members is discouraged at all times.

## ***2.4 Conduct on the Golf Course***

- 2.4.1 Members are forbidden to trespass on lands adjoining the course;
- 2.4.2 Members are required to smooth out their footprints in bunkers, to replace divots and repair their (and any other noticed) pitch marks on greens;
- 2.4.3 Members are expected to acquaint themselves as to Local Rules in place at the time of their play.

## ***2.5 Timekeeping***

- 2.5.1 If you are late or cannot make a tee-time, please ring in advance to notify the club.
- 2.5.2 If you miss your tee-time you must wait until the next available slot.
- 2.5.3 The Committee reserve the right to invoke disqualification for breach of this Rule of Golf 6-3. Alternatively the Committee may invoke a penalty for failure to start on time as follows:
- Loss of first hole in matchplay
  - Two strokes at the first hole in Strokeplay.

## **2.6 *Slow Play***

- 2.6.1 If a match fails to keep its place on the course and loses more than one clear hole to the players in front it **must** call through the match following;
- 2.6.2 Players searching for a ball should signal the players behind them to pass as soon as it becomes apparent that the ball would not easily be found. **They should not search for the permitted five minutes before doing so.**
- 2.6.3 When play of a hole has been completed, players should **immediately** leave the green and proceed towards the next tee box, the completion of scorecards should not be carried out in the vicinity of the green;
- 2.6.4 Players should ensure that golf bags, trolleys and buggies are left on the correct side of the green to enable direct progress to the next tee box without delay;
- 2.6.5 If there is a doubt about a ball being “out of bounds” or lost outside of a hazard it would expedite play if a “provisional ball”, (it is the player’s responsibility to clearly state that the second ball being played is a “provisional ball”), was played before proceeding.
- 2.6.6 Players should ensure that Bags, Trolleys and Buggies are kept off the greens and tee boxes.

## **2.7 *Priority***

- 2.7.1 Members shall not “cut-in” while a competition is in progress without permission of reception;
- 2.7.2 Member shall not “cut-in” on any part of the course unless the previous hole is clear from tee to green.

## 3 Competitions Bye Laws

Competition Bye Laws are enforced by the **Competition Committee**.

### 3.1 Definition of Major Competitions

The following competitions are considered Major Competitions and will be used for player of the year points:-

- Captain's Prize
- Professional's Prize
- President Prize
- Vice-Captains Prize
- Monthly Medals

### 3.2 General Competition

- 3.2.1 A time sheet shall be in operation for all competitions, members should, where possible, play competition in a minimum **three** ball format;
- 3.2.2 The usage of motorised buggies is prohibited in the Major competitions(as in 3.1 above) and in the Club Championship competition unless a player is in possession of a Medical Certificate stating that he/she is unfit to walk;
- 3.2.3 The use of caddies is prohibited in all competitions except in interclub competitions.
- 3.2.4 Ties shall be decided by the Committee, whose decision is final.
- 3.2.5 When entering a competition the member must
- Enter his name on the entry sheet and enter through swipe card (or PIN No.) on the computer (singles competition)
  - Pay his competition entry fee prior to playing;
- 3.2.6 Having completed his round, the player must:
- Complete his scorecard properly i.e. Date, Name, Competition, Handicap, Markers Signature and Players Signature (omission of any of the aforementioned details will result in the player being disqualified under Rule 6-6-b) ;
  - Enter his score on the computer (singles competition);
  - All cards must be returned without delay to the competition box provided for that purpose and cards so returned cannot be altered subsequently
- 3.2.7 It is obligatory that a member who enters his name on a club competition entry sheet submits a completed scorecard – **cards not entered onto the computer will be classified as a non return.**

### **3.3 Juvenile Members**

- 3.3.1 Juvenile/Student/Junior members with a handicap of 19 or over are not eligible to win outright any adult individual club competition
- 3.3.2 One juvenile per timeslot is allowed when competing in adult single and 3-person team competitions;
- 3.3.3 Juveniles must partner adult members in all non-Singles club championships.

### **3.4 Matchplay Competitions**

- 3.4.1 Entrance fees for knockout competitions must be paid prior to the draw being made.
- 3.4.2 All rounds in matchplay competitions shall be played from the medal tees unless otherwise decided by the Committee;
- 3.4.3 In the event of tie holes, the 1<sup>st</sup> (First) hole shall be the 19<sup>th</sup> (Nineteenth) and the match shall continue until a hole is won, taking strokes as on the scorecard;
- 3.4.4 In any competition where play is ordinarily spread over a prolonged period (e.g. matchplay) a competitor must play off his current up-to-date GUI handicap unless otherwise specified by the committee competition;
- 3.4.5 In match play the onus is on the player drawn on the top to contact the other player. If the top player on two separate occasions tries to contact the other player to agree dates to no avail or he should contact the member of the Competition Committee, assigned to manage the matchplays (if the player does not know, contact the Competition Secretary) a week prior to the deadline. The competition committee will then intercede and decide on one of the following actions:-
  - Get the players to agree on a date prior to the deadline.
  - Rule against one of the players and give a walkover to the other.
  - Disqualify both players
  - Under unusual circumstances give an extension
- 3.4.6 If the top player fails to contact the other player to agree dates within one week to the deadline, the player drawn lower in the draw should contact a member of the competition committee as in 3.4.5. The competition committee will then intercede as in 3.4.5 also
- 3.4.7 In the event that the match has not been played by the deadline (as in 3.4.5 and 3.4.6) and neither player contacts the competition committee both players shall be disqualified with no appeal.

## **4 Handicap Bye Laws**

Handicap Bye Laws are enforced by the **Handicap Committee**.

### ***4.1 Non Return of Competition Scorecards***

Failure by club members to return competition cards during the period March – October shall incur the following sanctions:

- 1<sup>st</sup> Failure to return card – Verbal warning from Handicap Secretary/Committee
- 2<sup>nd</sup> Failure to return card – Written warning from Handicap Secretary/Committee
- 3<sup>rd</sup> Failure to return card – Suspension of **CLUB** handicap for 2 Weeks
- 4<sup>th</sup> Failure to return card – Suspension of **CLUB** handicap for 4 Weeks
- 5<sup>th</sup> Failure to return card – Suspension of **GUI** handicap for 2 weeks

In the event of further failures to return cards the member shall be requested to attend a meeting with the Disciplinary Committee to discuss their failure to submit cards following competitions.

### ***4.2 Annual Handicap Review***

The decision of the handicap committee with regards to reducing or increasing player's handicaps at the end of the year is final.

## **5 Disciplinary Bye-Laws**

Disciplinary Bye Laws are enforced by the **Disciplinary Committee**.

### ***5.1 General***

- 5.1.1 Infringements of the Rules of Golf and/or the Bye Laws of the Club may result in disciplinary action being taken against the offending member.
- 5.1.2 A member may make a complaint against one or more members. This complaint must be put in writing and sent to the Disciplinary Committee for consideration.
- 5.1.3 Should the Disciplinary Committee agree that disciplinary action is warranted then the member shall be invited, in writing, to attend a disciplinary hearing of the Disciplinary Committee in order that the facts can be ascertained;
- 5.1.4 Where a member fails to attend the disciplinary hearing then the Disciplinary Committee shall make a summary judgement based on the facts to hand;
- 5.1.5 Where disciplinary action is sanctioned the member will be notified by letter of the decision and of the date from which it will take effect, which will be not sooner than 7 days from the postage date of the notifying letter.
- 5.1.6 All disciplinary actions sanctioned by the Disciplinary Committee shall be subject to the Appeal Process detailed at 5.2 below.

### ***5.2 Appeal Process***

- 5.2.1 Any member in receipt of a disciplinary action has the right to appeal the action by submitting in writing to the Honorary Secretary their intention to do so prior to the effective date of the action.
- 5.2.2 The Honorary Secretary on receipt of a notice of appeal will notify the Disciplinary Committee members to convene a meeting in order to hear the member's appeal;
- 5.2.3 The meeting should be held within 14 days of notice of appeal being received;
- 5.2.4 The member appealing the disciplinary action must attend in person at the date and time notified to him by the Honorary Secretary,
- 5.2.5 Until the appeal hearing the disciplinary action shall not be enforced
- 5.2.6 The outcome of the appeal shall be notified to the member following the appeal hearing and a letter shall issue confirming the appeal decision;
- 5.2.7 In the event of the appeal being rejected or the member failing to attend the meeting the disciplinary action shall come into effect immediately.

## 6 Local Rules

Local Rules generally related to the course and supplement the rules of golf. The **Golf Course Owner** is responsible for managing and changing these local rules

### 6.1 Course

- 6.1.1 Over the boundary fences, ditches and hedges surrounding the course whether marked by white stakes or not namely:

**Front 9:**

Fences/Ditches to the left of Holes 1,2,3,4, 5, the 8<sup>th</sup> Tee Box  
The Practice Grounds to the left of the 9<sup>th</sup> Fairway;

**Back 9:**

The Clubhouse Car Park,  
The Entrance road (alongside the 10<sup>th</sup> hole),  
Fences to the right of holes 10, 11, 12 and 17,  
Fences at the rear of Greens/ Tee Boxes on holes 12,13,14,15 and 16,  
The Practice Grounds to the right of the 18<sup>th</sup> Fairway.

- 6.1.2 Hazards (Rule 26)

All ponds and lakes marked by yellow stakes are water hazards.  
All ponds or ditches marked by red stakes are lateral water hazards.  
Note: stakes or lines defining the margins of hazards are in the hazard.

- 6.1.3 Immovable Obstructions (Rule 24):

Sprinkler Heads, hydrant covers, tee markers, seats, manhole covers, drain grates and drainpipes, signs, ball washers, litterbins, distance markers.

Boulder on left of ninth fairway is considered an immovable obstruction.

- 6.1.4 Ground under repair

Areas surrounded by white lines and/or red and white stakes and marked GUR, relief may be taken from GUR under Rule 25-1b, (Tractor Marks and Red Earth Included).

- 6.1.5 Ball on Tee or Green

A ball lying on a tee or green, other than that of the hole being played, must be dropped within one club length from the nearest point of relief, which must not be nearer the hole being played and not in a hazard without penalty;

- 6.1.6 Paths

All paths within the boundaries of the course are deemed immovable objects and a ball coming to rest there on **may** be dropped within one club length from the nearest point of relief, which must not be nearer the hole being played and not in a hazard without penalty.

### 6.1.7 Staked Trees

A ball adjacent to a staked tree which impedes the natural swing or stance of a player, ball must be dropped within one club length of the nearest point of relief, must not be nearer the hole being played and not in a hazard (without penalty).

### 6.1.8 Loose impediments

Loose impediments may be removed from sand bunkers;

### 6.1.9 Plugged Balls

Plugged balls may be lifted, cleaned and dropped within one club length no nearer the hole without penalty. This relief applies only "through the green" situations and not when the ball is plugged in hazards or bunkers.

### 6.1.10 Distance Markers

Distance markers to front of green Red 100yds, Yellow 150yds, Blue 200yds

## **6.2 *Placing***

### 6.2.1 Preferred Lies (Qualifying Competitions)

A ball coming to rest on a FAIRWAY may be lifted, cleaned and placed within six (6) inches (not nearer the hole).

### 6.2.2 Preferred Lies (Non-Qualifying Competitions)

A ball coming to rest on a FAIRWAY may be lifted, cleaned and placed within six (6) inches (not nearer the hole).

A ball coming to rest in the ROUGH may be lifted, cleaned and dropped within one club length (not nearer the hole);

### 6.2.3 Winter Rules (Non-Qualifying Competitions)

A ball coming to rest on a FAIRWAY may be lifted, cleaned and placed within six (6) inches (not nearer the hole);

A ball coming to rest in the ROUGH may be lifted, cleaned and placed within six (6) inches (not nearer the hole);

## 7 Procedure for Bye Law Changes

### 7.1 Change Log

This log should be updated for any changes made to the document. Changes can be group under a version e.g. 1.1 contains many changes

Document Version	Date of Change	Description of Change	Changed by	Approved By

### 7.2 Change Process

The Committee, in consultation with the Course Owner, shall from time to time to make, alter and/or repeal such Bye-Laws as it considers necessary. This process should start with a Bye Law Change Request that is first approved by the golf club owner, then the general committee and then at the AGM. The bye law is updated and the change log amended.

